

Directions to RSP Minneapolis

Visiting RSP Architects

DIRECTIONS

From Downtown Minneapolis

Go west on Washington Avenue to Plymouth / 8th Avenue NE. Take a right on Plymouth / 8th Avenue and go to Marshall Street (.6 miles). Take a left at Marshall Street and proceed four blocks.

OR

Go over the Hennepin Avenue bridge, take the first left on SE Main Street. SE Main turns into Marshall Street NE. Take Marshall Street (1 mile) to Broadway.

94 (From the North/West)

Go east on 94 to the Broadway exit. Go left on Broadway to Marshall Street (.6 miles). Take a left and proceed one block.

394 (From the West Suburbs)

Go east on 394 to 94 West. Exit on Washington/Broadway. Take a left on Washington, go one block, and then take a right on Broadway. Take Broadway to Marshall Street (.6 miles). Take a left and proceed halfway up the block.

35W (From South Suburbs)

Go north on 35W to 94 West. Exit on Washington/Broadway. Take a left on Washington, go one block, and then take a right on Broadway. Take Broadway to Marshall Street (.6 miles). Take a left of Marshall and proceed halfway up the block.

From St. Paul

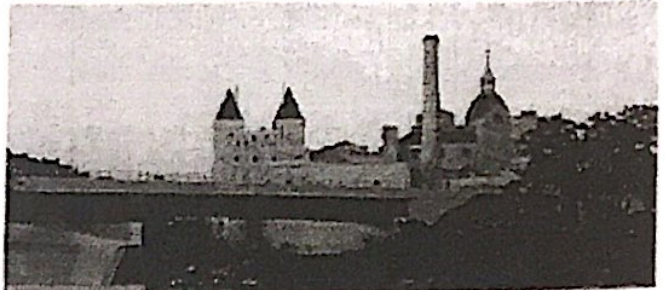
Go west on 94. Exit on Washington/Broadway. Take a left on Washington, go one block, and then take a right on Broadway. Take Broadway to Marshall Street (.6 miles). Take a left and proceed halfway up the block.

From Airport

Take Highway 5 north to Highway 55. Proceed west on 62 (Crosstown) to 35W. Follow directions for 35W listed above.

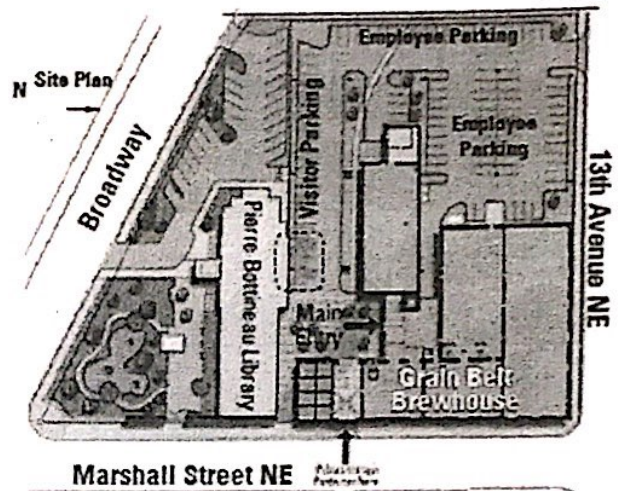
1220 Marshall Street NE 612.677.7100

ENTERING THE BUILDING



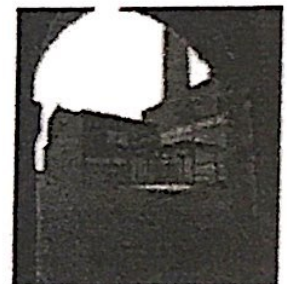
Guests and Client Parking

To easily access Guest and Client Parking please enter through the Brewhouse Porte Cochere, halfway up the block as you approach from Broadway. Parking is located along the fence line of the west parking lot. Handicap accessible spaces are designated near the main entry.



Main Entrance

The main entrance to the building is through the glass door in "The Link" connecting the boiler house to the brewhouse building. Guest and client parking is nearest to the main entrance and visitors should enter there. All visitors must check in with the receptionist in the main lobby. The receptionist will notify the staff person being called upon.



Official building hours are from 8 AM to 5:30 PM. The main entrance will be locked before and after those hours. The main office telephone line will be on auto attendant before and after those hours.

Transit Information

See www.metrotransit.org for information on bus schedules, transit routes, etc. (Routes 627 or 18)



R S P A R C H I T E C T S