

audio track of design interview found at:

<http://www.iida-northland.org/forums/>

IIDA

NORTHLAND
chapter

FORUMS + PROFESSIONAL DEVELOPMENT PRESENTS



westwood hills nature center

ST. LOUIS PARK

thank you to our IIDA Northland Sponsors!

Diamond

ATMOSPHERE
COMMERCIAL INTERIORS



GARDNER
BUILDERS

Platinum

Allsteel
Henricksen

GENERAL
OFFICE
PRODUCTS



Intereum
HermanMiller

ISPACE
environments

J-J FLOORING

Knoll
parameters

shaw contract®

Steelcase

Tarkett

Gold

AIS

BKV
GROUP

CERAMIC
TILEWORKS



esc

HAWORTH

HGA

HON.

jth
LIGHTING
ALLIANCE

KEILHAUER



Milliken

OF S

Perkins&Will

prevolv
Evolving your work environment.

Primary DesignResource



teknion
LUUM
studio | <

Silver

BWBR • Contract Office Marketing • Ditty Rehkamp • Integra Seating / Winsor Associates

Loll Designs • Mohagen Hansen Architecture | Interiors • NELSON • Patcraft Commercial Flooring

Room & Board • St. Paul Construction • Tierney Brothers • Wilsonart

Bronze

Alliance • Art Partners Group • BDH • Bernhardt Hospitality • Cambria • Commercial Furniture Services

Cunningham Group • Designtex • DLR Group • Greiner Construction • Hardwoods Specialty Products

HDR • Humanscale • IMEG Corp • kate-jo tile & stone • Maharam • Nessly Interior Resources

Pope Architects • Pulse Products • Ryan Companies • Schrader Herneke • Ultrafabrics/e tu interiors

w.d. Frederickson • Wolf Gordon



CITY OF ST. LOUIS PARK

Nature Center Manager | Mark Oestreich

ARCHITECTURE + INTERIOR DESIGN

HGA

Architect | Glenn Waguespack, Andrew Holmgren

Interior Designer | Natalie Rethlake

CONSTRUCTION + PROJECT MANAGEMENT

RJM Construction

FURNITURE

Henricksen

EXHIBIT DESIGN

Splitrock Studios

PHOTOGRAPHER (excludes design detail shots)

Pete Sieger

architecture

EMBRACING THE VARIETY FOUND IN NATURE



Creating a net zero building was one of the major drivers of the new nature center. Many architectural systems were implemented to lower the building's energy load. Some of the architectural strategies include:

- Ceiling Fans
- Water Vapor "Fireplace"
- Radiant Floor Heating
- Building Orientation on Site
- Solar Panels on the Rooftop

A net zero building means that the building will produce as much renewable energy as it needs to meet the building's annual energy loads.



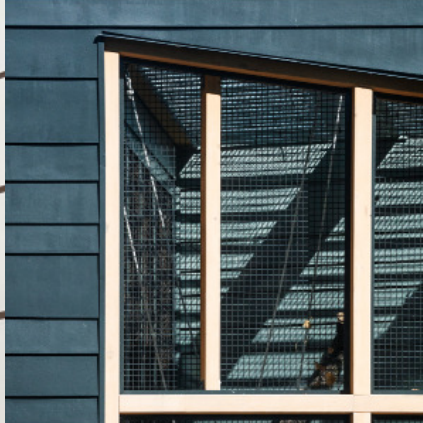
CEMENT BOARD SIDING

UV BIRD SAFE GLAZING

ALASKAN YELLOW CEDAR

FRITTED BIRD SAFE GLAZING

ANIMAL ENCLOSURES



interior design

THE FOUR BIOMES OF MINNESOTA



By taking an architectural section cut through the landscape of the four biomes of Minnesota an identity for the Westwood Hills Nature Center was contrived.

- **Prairie Grassland**
- **Tallgrass Aspen Parkland**
- **Deciduous Forest**
- **Coniferous Forest**

You will see architectural details that tie back to these. Brass expansion joints relate to the controlled prairie burns. The tile outside the restrooms represent scales or feather plumage. Even the color scheme throughout the nature center relates back to the local flora and fauna.



One of the drivers of the space was to use the building itself as a teaching tool for the community.

You will see “sneak peeks” into some of the service areas including the raptor enclosure rooms. There is also a glass “cut-out” in the floor that showcases the radiant floor system.

Creating spaces both for adults and children to learn more about the nature center itself, you will see educational plaques throughout the nature center explaining sustainability strategies integrated into the design.

COMMISSIONED LOCAL ART GLASS



BIOME INSPIRED SIGNAGE



BRASS EXPANSION JOINTS



COLOR STORY COAT HOOKS



PLUMAGE + SCALE INSPIRED TILE

